



Kwantify Installation and User Guide

Prepared by
Pradyut Mohan Dash
Date: 18-July-2005

1.0 Hardware and Software Requirement 3
2.0 KWANTIFY PORTAL Installation Files 3
3.0 Installing KWANTIFY PORTAL 3
 3.1. Setting up Environment 3
 3.2. Setting up Web Site 8
 3.3. Install the COM objects 11
 5. Create Database user for KWANTIFYPORTAL Database..... 14
 3.5. Change Connection file 17
 3.7. Test Installation 22
4.0 User Guide: 22

Introduction

This document describes the steps for installing KWANTIFY PORTAL. The installation, though simple, involves a number of steps. Some of the components used by this product have been supplied by CSM. This product also uses third party components and products. This document depicts the installation procedure in a step-by-step manner.

This document is meant for System Administrators. Knowledge in Database, Internet Information Services(IIS) and installing COM/COM+ objects are required to install this product.

1.0 Hardware and Software Requirement

- **Hardware Requirement :**
The following are the minimum requirements for the installation and running of KWANTIFY PORTAL Web application.
 - Pentium IV and higher
 - 218 MB RAM or more
- **Software Requirement :**
 - Windows 2000 Server or above
 - IIS 5.0 or above
 - MS Data Access Components 2.7 (MDAC 2.7) or above
 - ASP 3.0
 - Internet Explorer 5.0 and above
 - Microsoft SQL Server 2000 or higher

2.0 KWANTIFY PORTAL Installation Files

The KWANTIFY PORTAL Software Installation source contains the following folders.

- a) **DATABASE :**
Contains KWANTIFY PORTAL database files.
- b) **COM :**
Contains dll files required for Kwantify Portal.
- c) **WEBROOT**
Contains the folders and files necessary for KWANTIFY PORTAL web application.

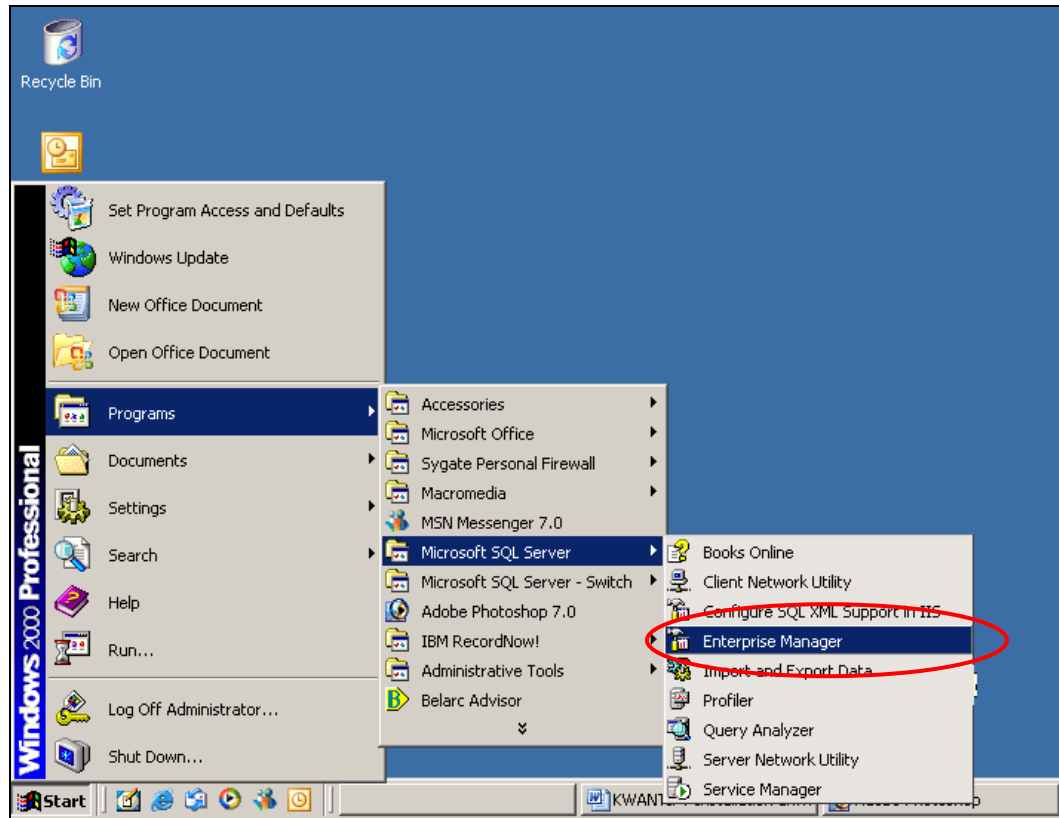
3.0 Installing KWANTIFY PORTAL

Follow the steps mentioned below to install KWANTIFY PORTAL.

3.1. Setting up Environment

Make sure all the required services (mentioned in 1.0 above) are installed and running. MDAC 2.7 or above must be installed.

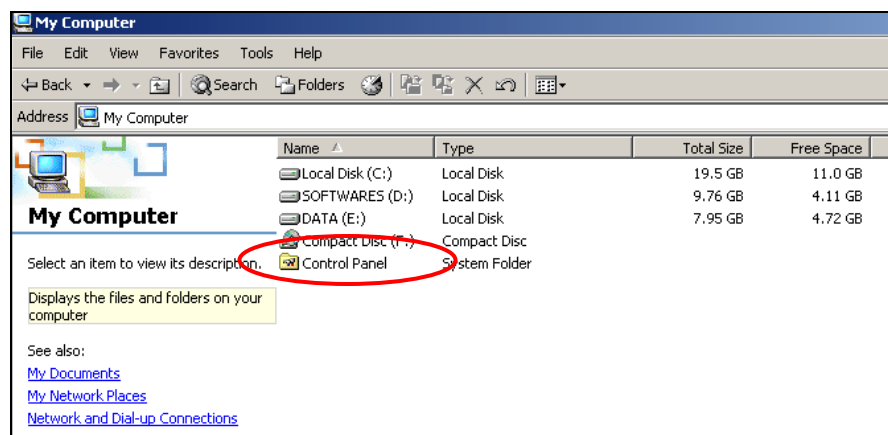
1. Check SQL Server:
 - a. Please check whether SQL Server is installed in the server or not. You can check the SQL server in program menu as follows:

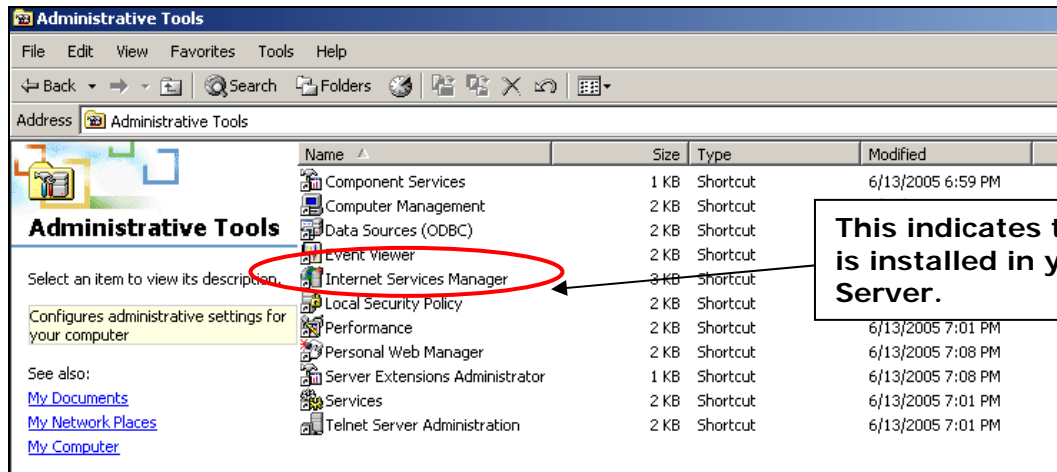
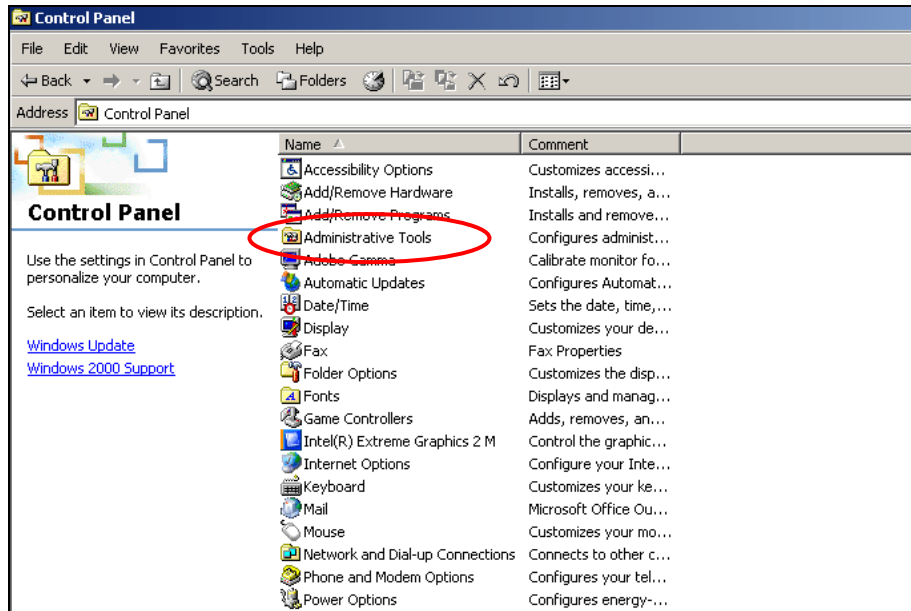


If you do not find the Enterprise Manager in the program menu then install the SQL Server in the server. In order to install SQL Server please contact your system administrator.

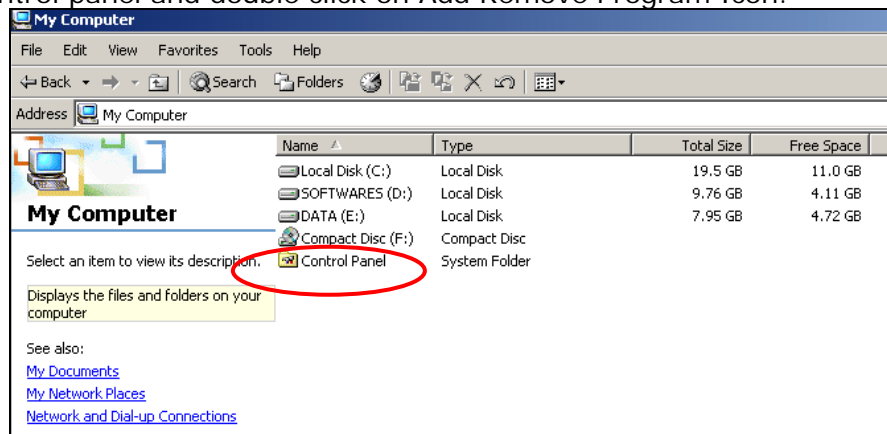
2. Check Internet Information Server:

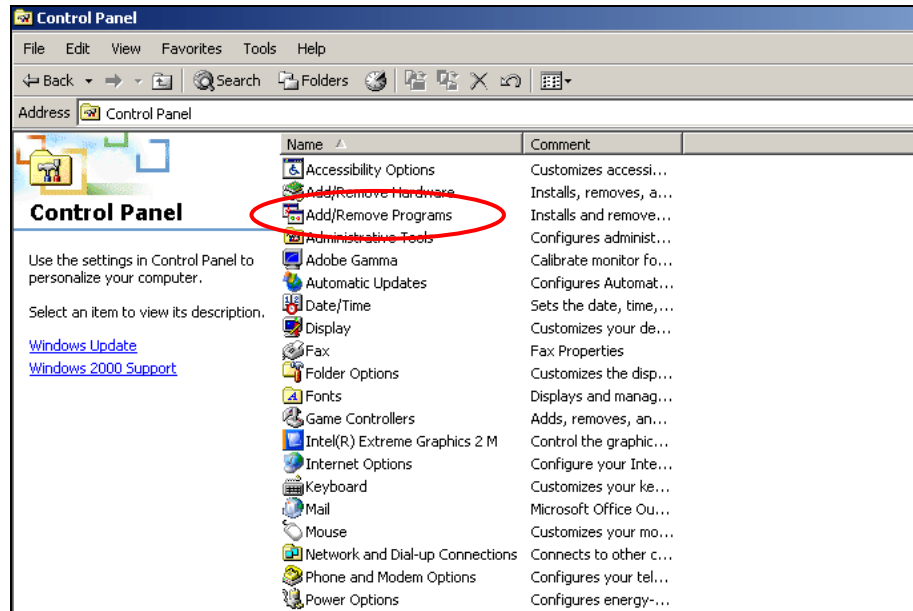
Please check whether IIS is installed in the server or not. IIS is component comes along with Windows 2000 or above OS. To check whether IIS is installed in the server, check Administrator Tools in Control Panel.



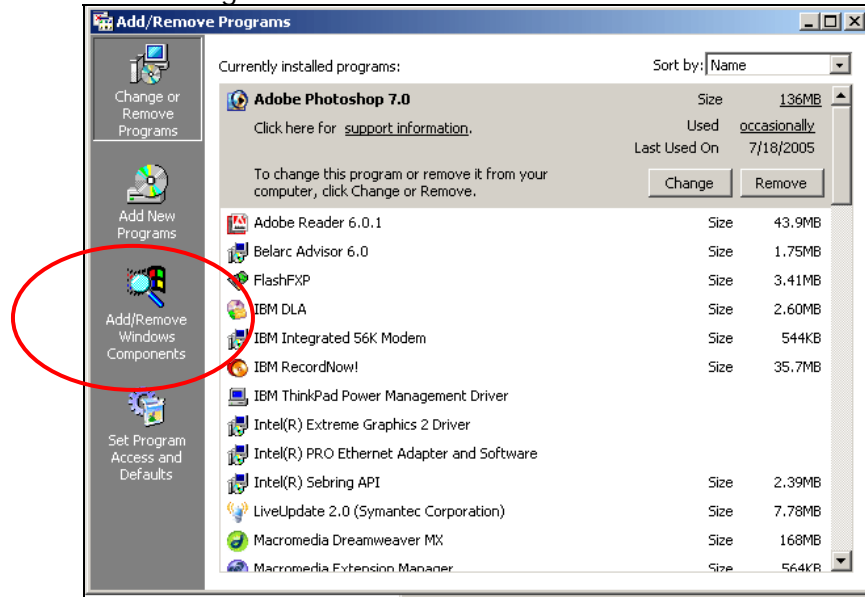


If you do not find Internet Service Manager then follow the steps below to install IIS in your Server.
 Step 1: Go to Control panel and double click on Add Remove Program Icon.

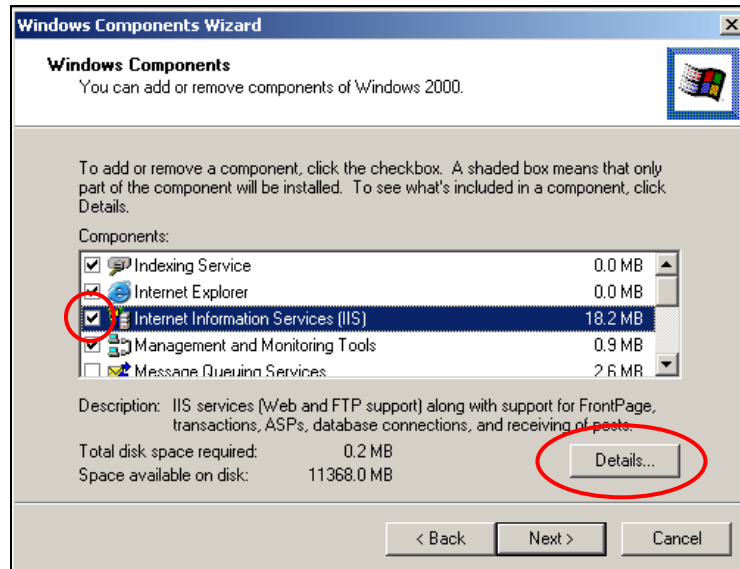




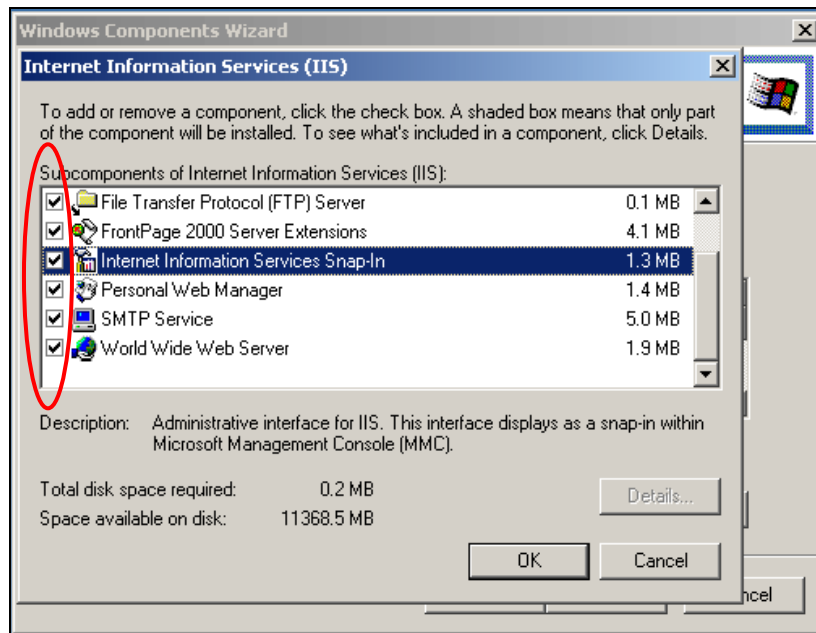
Step 2: In the Add/Remove Programs window select **Add/Remove Windows Component**.



Step 3: In the Add/Remove Windows Component Screen check on the Internet Information Services (IIS).

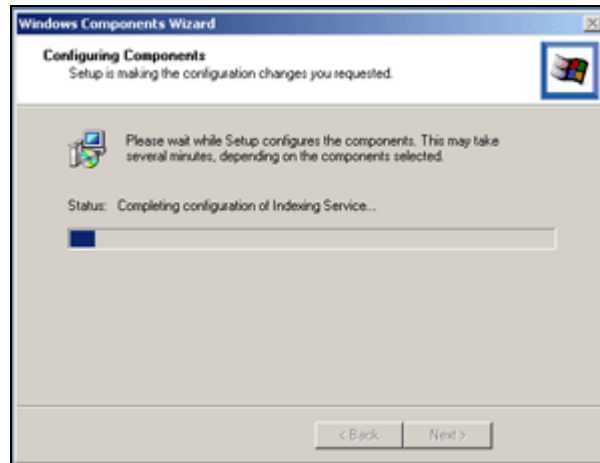


Step 3: Click on the Details button to select sub components of IIS.



Step 4: Check all the components of IIS as shown above. Click on "OK" button.

Step 5: Click on Next button on the previous screen.



During the installation process the system may ask for the Windows OS CD. In that case insert the CD into the CD drive and select the "I386" folder to select the appropriate dlls.

Step 6: Click on the Finish button on the next screen to finish the installation process.

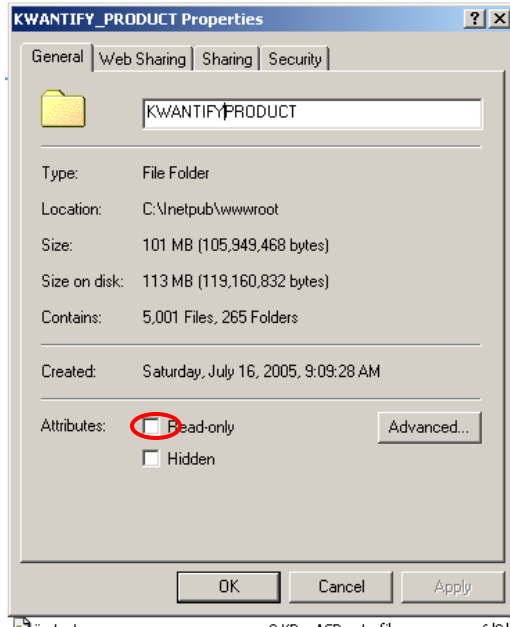


3.2. Setting up Web Site

There are two ways of setting up of a website and configuring it for KWANTIFY PORTAL use.

Method 1 :

Copy the **KWANTIFYPORTAL** from the WWWROOT folder to **C:\INETPUB\WWWROOT** folder on the server. **Then change the attributes of the files and folders and uncheck the READONLY attribute.**



Method 2:

Copy the KWANTIFYPORTAL Folder from the WWWROOT Folder on the CD to the server's local drive. **Then change the attributes of the files and folders and uncheck the READONLY attribute.**

Create a new web site using IIS.

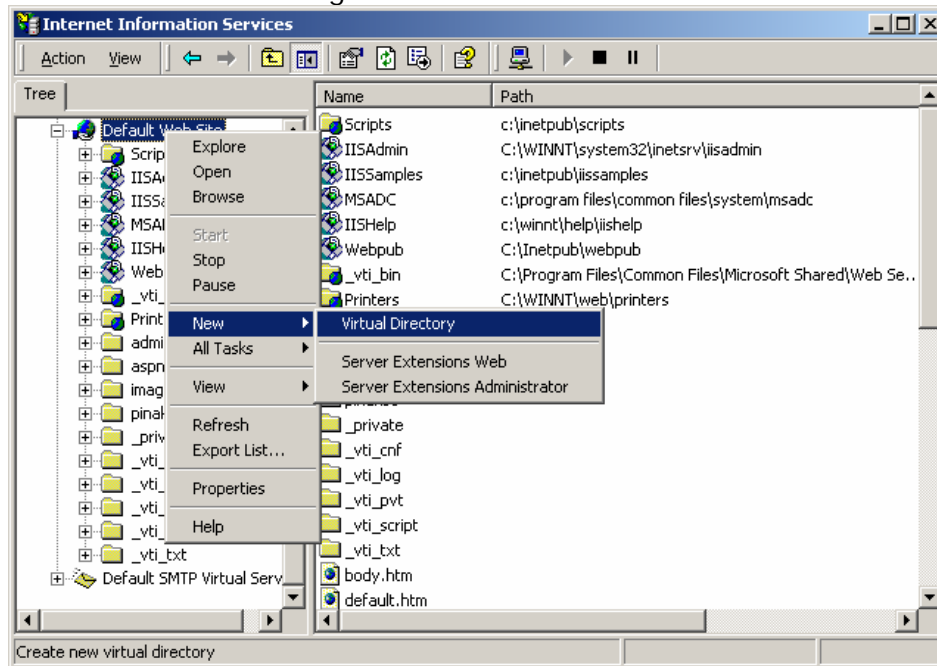


Fig : Creation of a WebSite (Step 1)

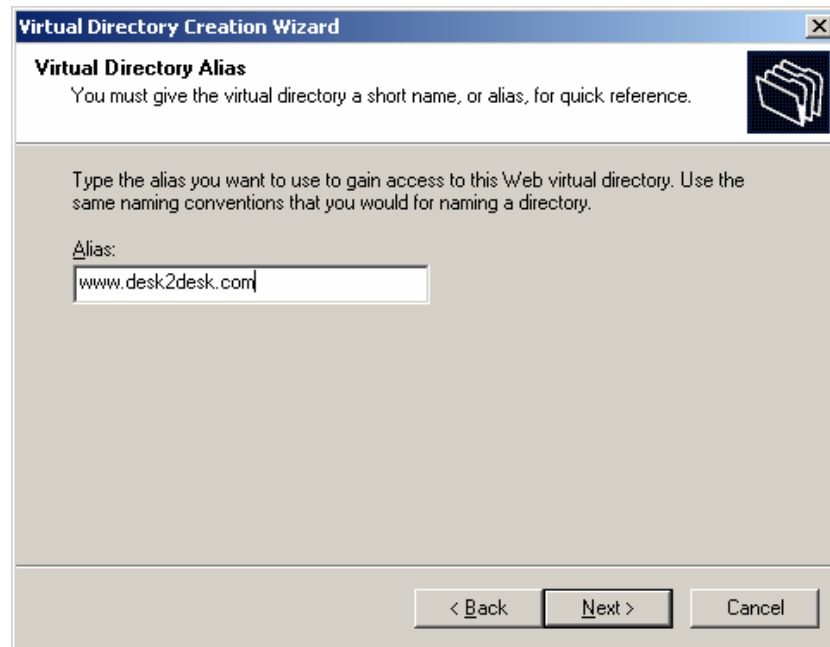


Fig : Creation of a WebSite (Step 2)

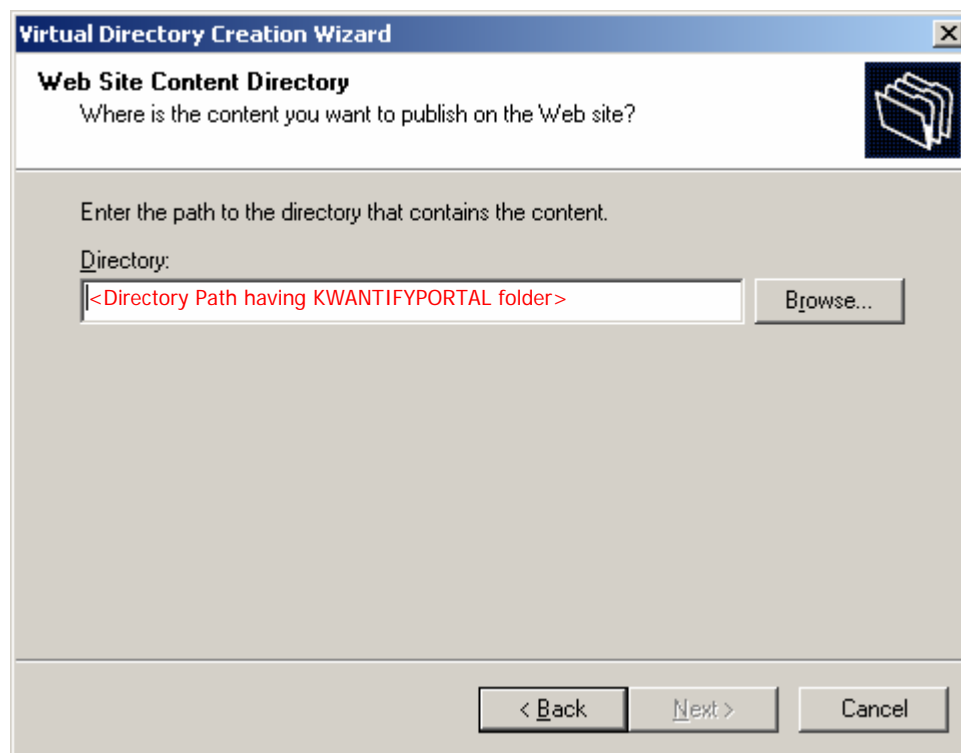


Fig : Creation of a WebSite (Step 3)

The Directory of the Web Site should point to KWANTIFYPORTAL directory.

3.3. Install the COM objects

KWANTIFY PORTAL uses the following COM objects.

- AspSmartUpload.dll
- CDONTS.dll
- essCypher.dll

Use the following steps:

1. Open COM folder downloaded from the web or from the Installation CD.
2. Copy AspSmartUploadUtil.dll, AspSmartUpload.dll, essCypher.dll and CDONTS.dll to the system folder ,i.e., C:\WINNT\SYSTEM32 (considering your Microsoft Windows OS is installed in C:\WINNT) of your machine
3. Register dlls by typing the following command one after the other at **Start-> Run**

```
regsvr32 c:\winnt\system32\AspSmartUpload.dll
regsvr32 c:\winnt\system32\ CDONTS.dll
regsvr32 c:\winnt\system32\ essCypher.dll
```

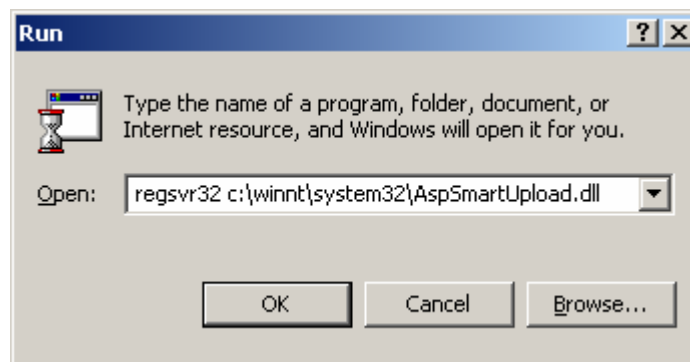


Fig : Registering the DLL files

Note: 1. It is recommended that copy all the contents (DLLs) of the COM folder in the system folder (C:\WINNT\SYSTEM32) of the machine and then perform step 2 and 3. This will help you to easily update the KWANTIFY PORTAL in future.

3.4. Setup Database for KWANTIFY PORTAL

1. Copy the Database data and log files for KWANTIFY PORTAL, which is in the DATABASE folder to **Data** Folder of your Database server where the Microsoft SQL Server is running. Typically the Data Folder is located in "**Program Files\Microsoft SQL Server\MSSQL**" Folder. Uncheck the READONLY attribute of these two files.
2. Open SQL Server Enterprise Manager from Pogram files. (Start>>Program Files>>Microsoft SQL Server>>Enterprise Manager).
3. Expand the Databases of the Local database. Right click on the Databases and select All Tasks and then Attach Database.

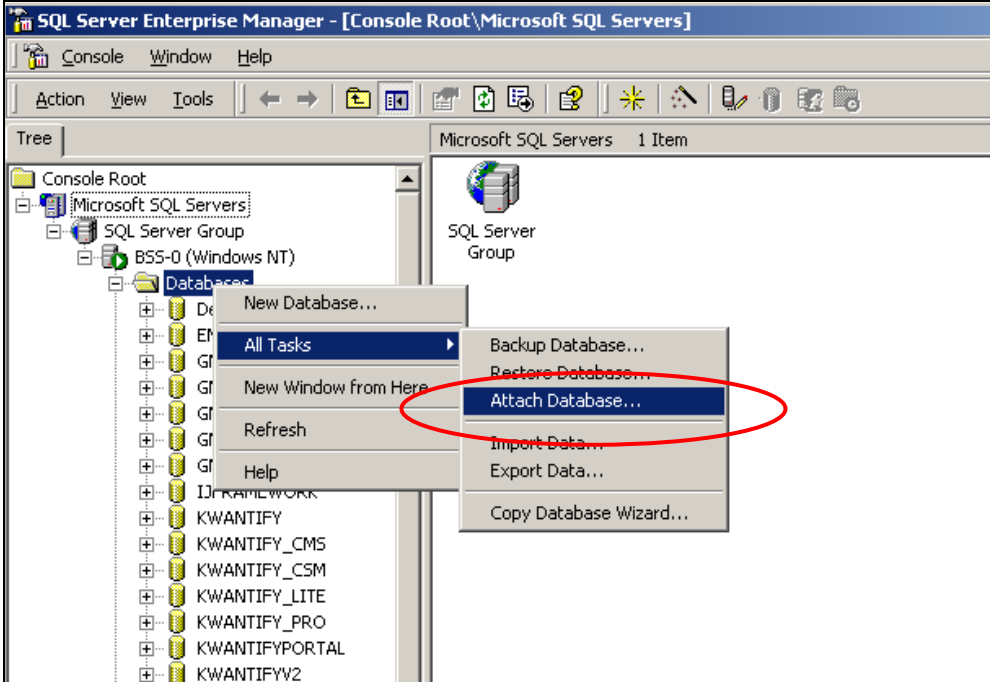
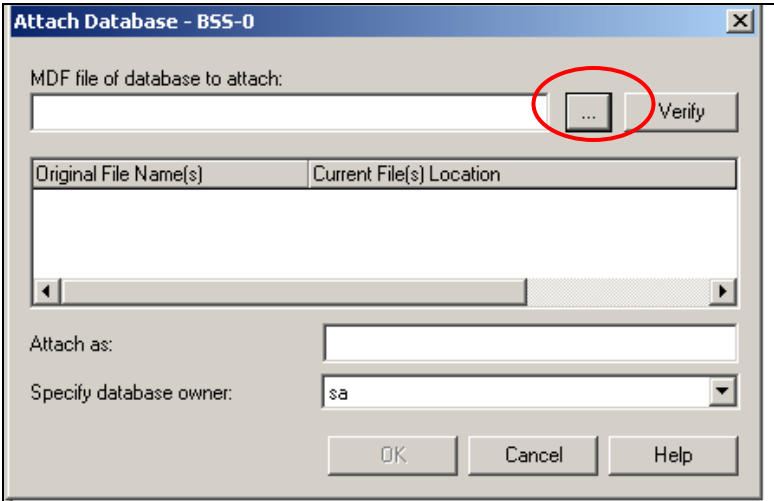
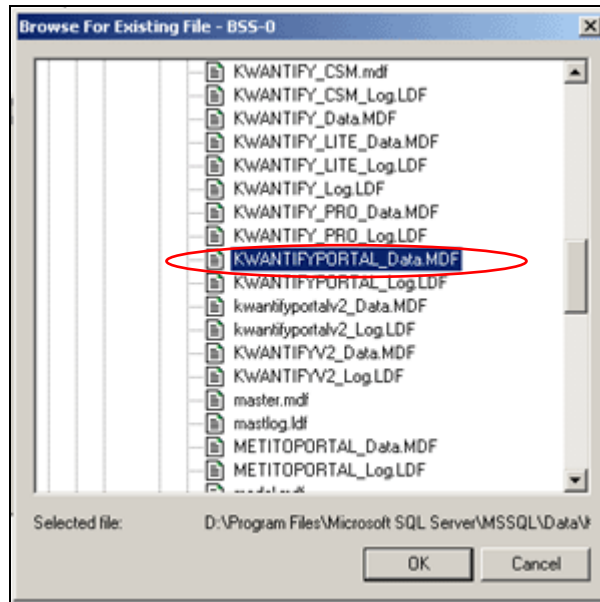
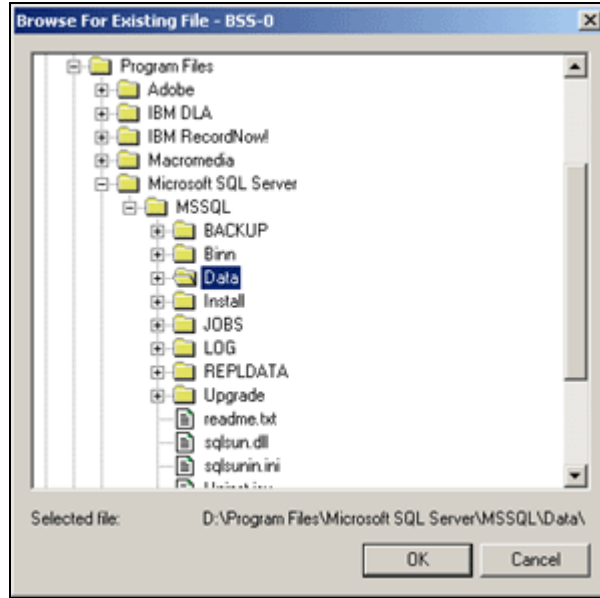
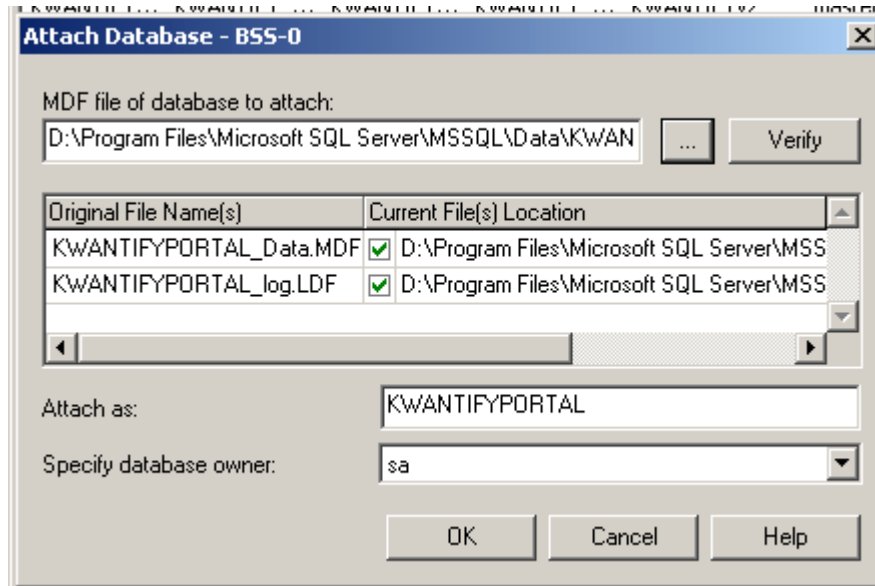


Fig : Attaching KWANTIFYPORTAL Database

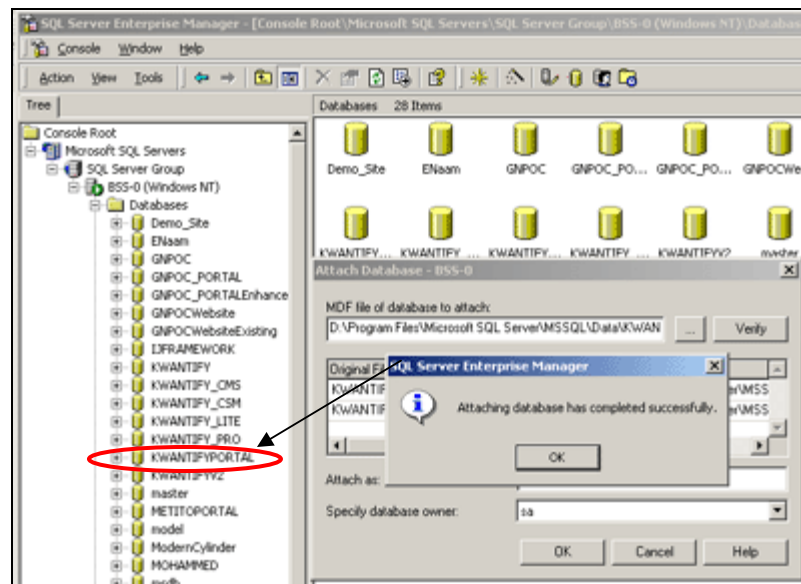
- 4. Select KWANTIFYPORTAL_data.mdf file from the Data Folder as shown below.







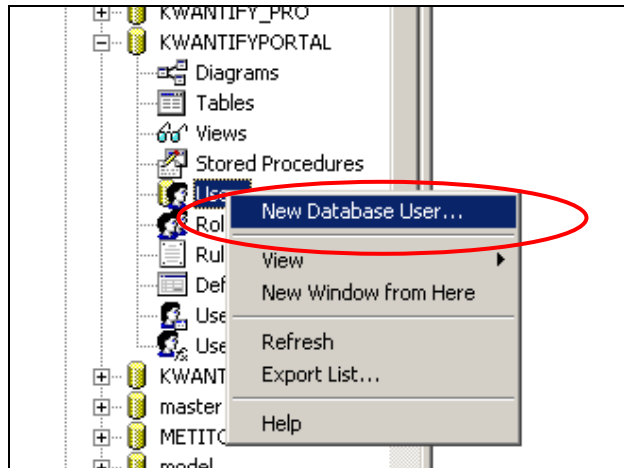
Click on the OK button to attach the KWANTIFYPORTAL Database. An alert message will confirm the attachment of the database to the database server.



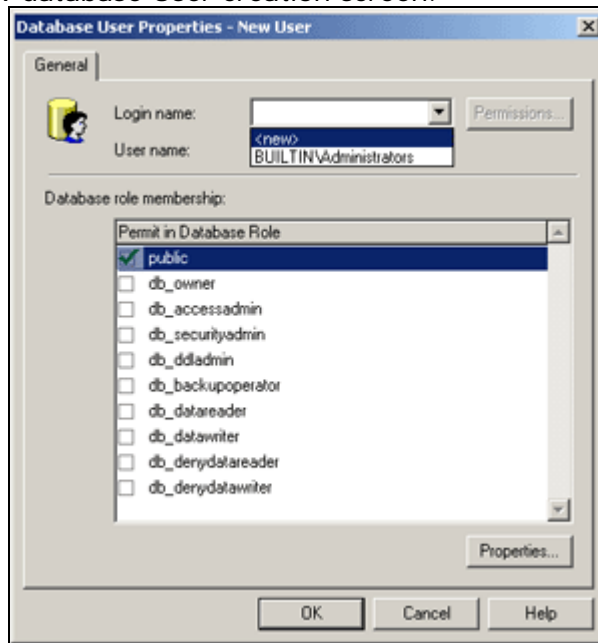
You can see the Database KWANTIFYPORTAL Attached to the server in the left side pane.

5. Create Database user for KWANTIFYPORTAL Database.

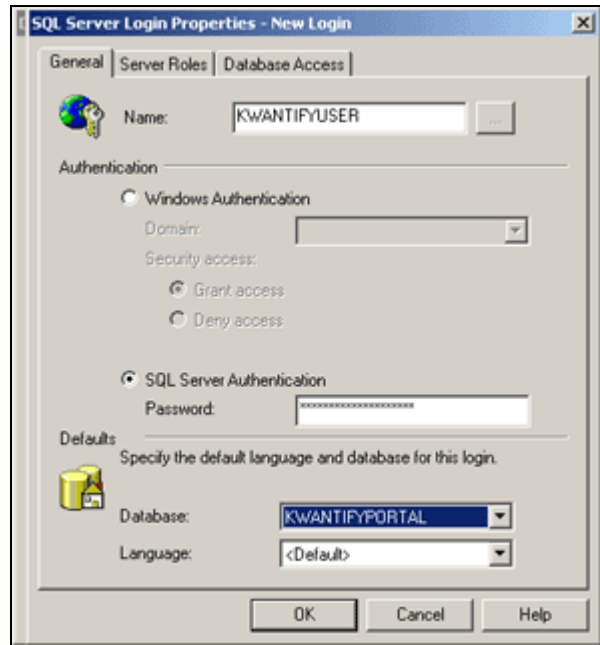
Step 1: Expand the Database "KWANTIFYPORTAL". Right click on the Users Icon and select "New Database User" as shown below.



The next screen is the new database User creation screen.

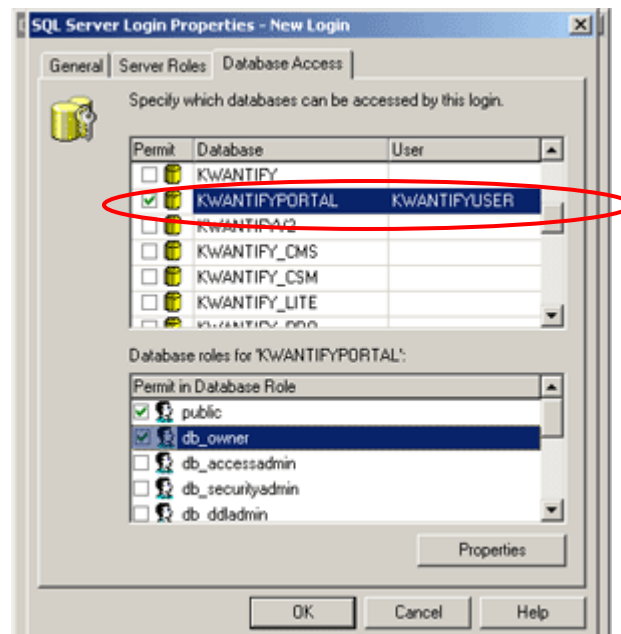


Select <New> from the Login Name Drop down menu. This will open another window for creation of new login name.



- ➔ Enter “KWANTIFYUSER” name in the Name Field.
- ➔ Check the SQL Server Authentication under **Authentication** option.
- ➔ Give the password for the newly created user.
- ➔ Select “KWANTIFYPORTAL” from the Database dropdown menu.

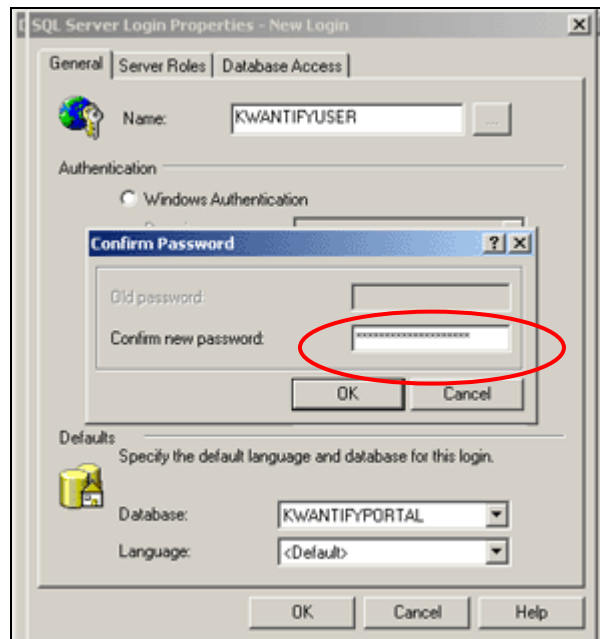
Now click on the Database Access tab on the same screen. Check on the “KWANTIFYPORTAL” database from the list as shown below.



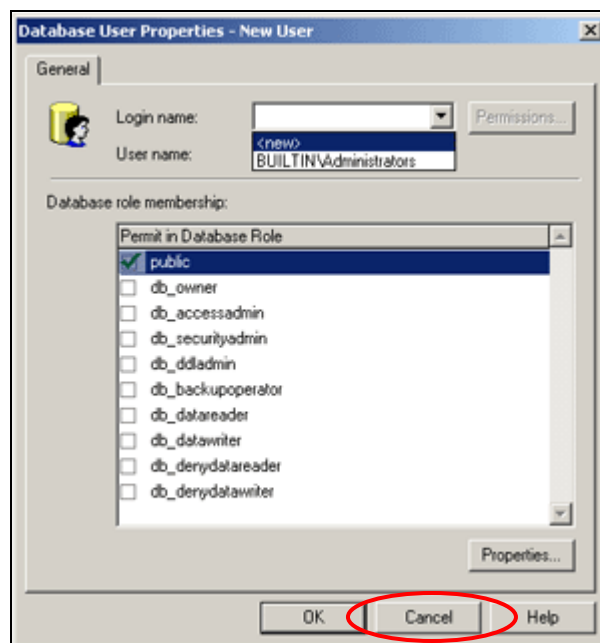
In the Permit in database Role section, check the following options:

- ➔ Db_owner
- ➔ Db_datareader
- ➔ Db_datawriter.

Click on the OK Button to save the changes. This will ask for confirmation of the password. Give the same password as given in the above screen.



Click on the ok button on the Confirm Password screen. This will close the New login screen.



Now click on the Cancel button in the New User Screen.

3.5. Change Connection file

1. The connection file is situated in the KWANTIFY PORTAL\Include folder. Open the D2Dconnection.asp file in Notepad. Change the Data source, UserID and Password field according to the SQL Server running on the database server.

For Example :

```
Conn.Open "Provider=SQLOLEDB; Data Source=<YOUR DATABASE SERVER IP ADDRESS>; Database=KWANTIFY PORTAL; User ID= <USER NAME>; Password= <Password for user>;"
```

Note: Make sure the userid is created for the KWANTIFY PORTAL Database

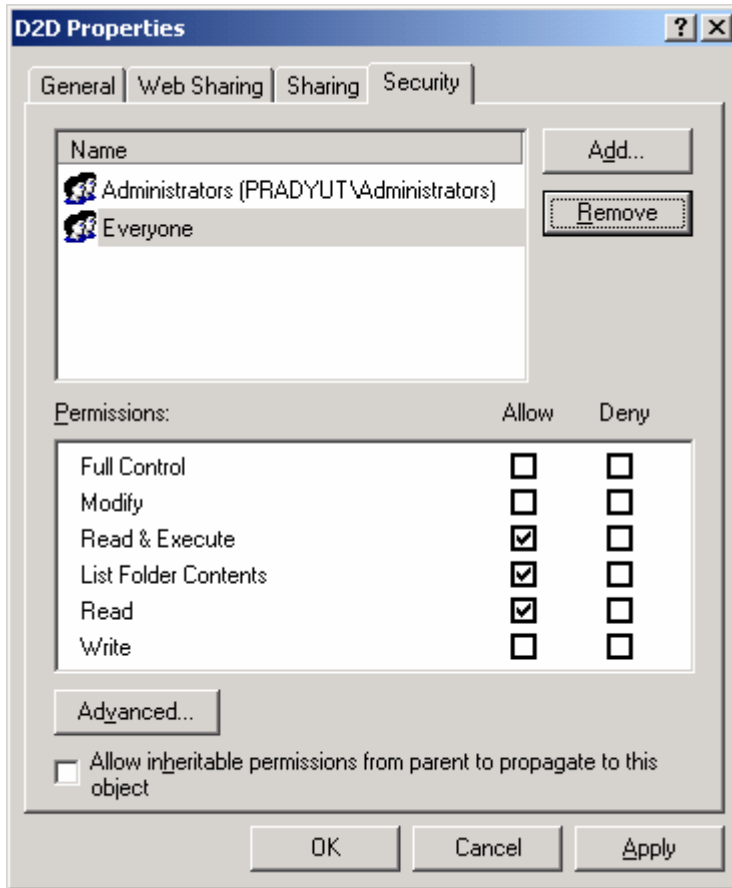
**** Be careful while changing the connection string otherwise the system may not work properly.**

3.6. Set Permission for Folders in Web-Server

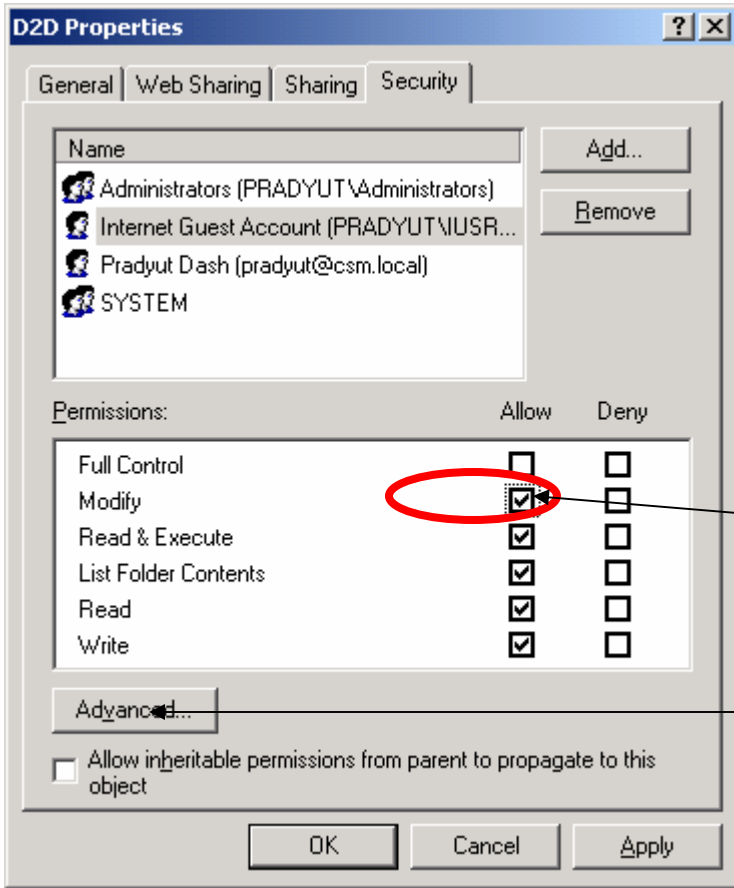
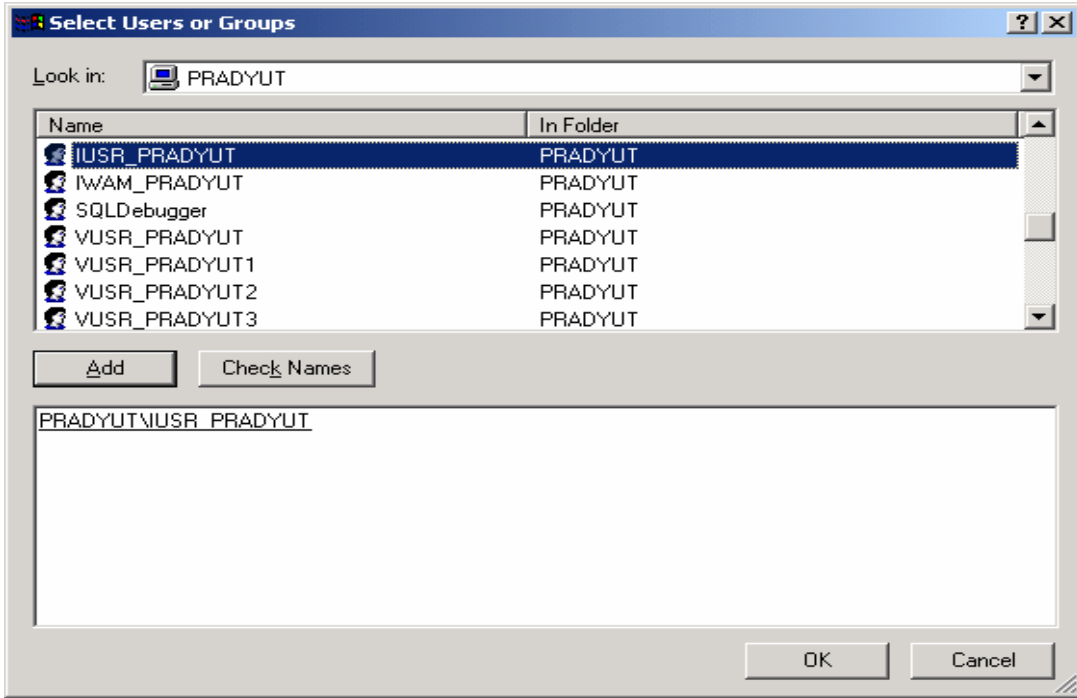
Unless your site is on an intranet, anyone on Earth can access it via the Internet (assuming you have an IP address). Since NT (or 2000 - they're the same) requires everyone to be logged in under a valid account name, IIS and Windows will automatically login any anonymous WWW user on your server under the Internet Guest Account. This guest account is the IUSR_<machinename> account and exists solely for anonymous users accessing your server.

Default IUSR_<machinename> account is attached to the Guests group and only has read, read & execute, and List folder contents permissions by default when added to a directory. [That is your permission denied problem.](#)

Here's how you fix. Open the directory specified in the file argument above. As an example I used c:\inetpub\www\KWANTIFY PORTAL so that would be the directory I would need to adjust the permissions for. Right click on the directory and click properties and you see something similar to this:



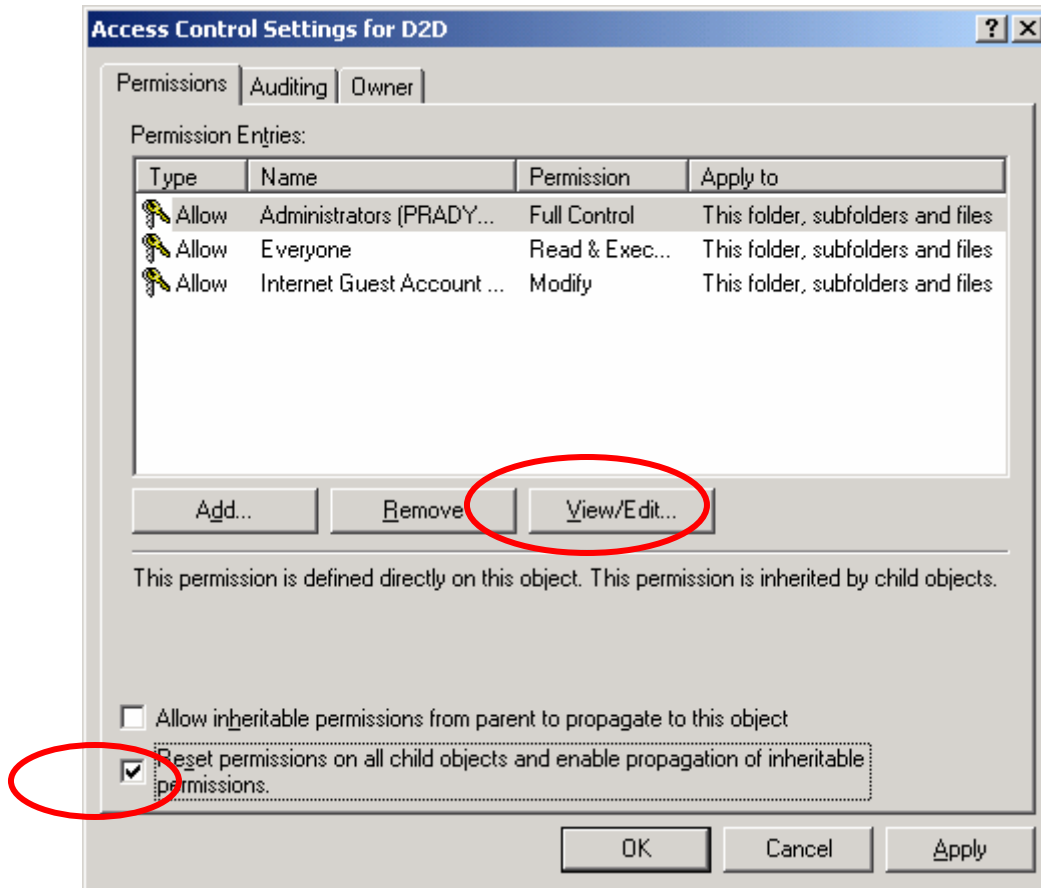
The account you need to change permissions for is the IUSR_<machinename> account. If the IUSR_<machinename> account is not in the list of accounts with access to this directory, it needs to be. So click the add button on the right and select IUSR_<machinename> from the list of available accounts on **your server**.



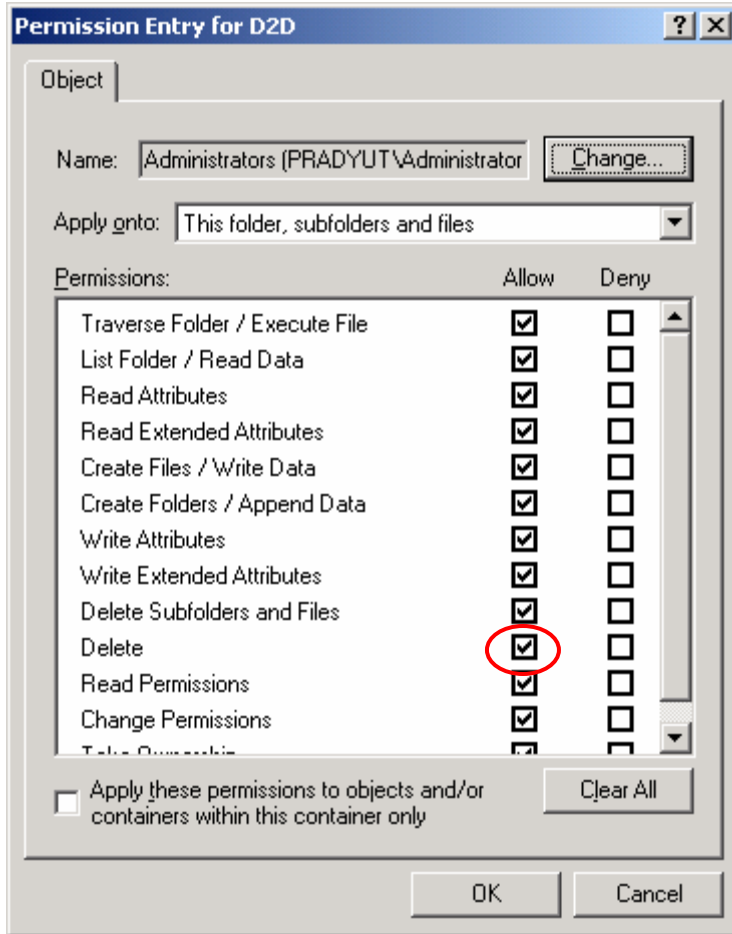
CHECK THE MODIFY BUTTON

Advance Button

Once the account is added to that directory, select it. When you do, it probably looks like the above example. All you need to do is click the Modify button under the allow column. The write button will automatically be checked when you do this because write permission is needed to modify a file. Click the apply button and then click the advanced button. You will see a screen similar to this one:



All you need to do in the above screen is click the second checkbox at the bottom. That will reset all permissions in that directory and any of its subdirectories, giving the IUSR_<machinename> modify access to those folders and files, solving the permission denied problem. Now click on the View/Edit button as shown above. The screen will look like the below image.



Check the delete subfolders and files button and click okay. Now Click on Apply Button on the Access setting tab. The System will ask for a confirmation. Click on Yes. Click on the OK Button on the same screen.

3.7. Test Installation

- Start the web site using IIS
- Open Internet Explorer and try to access the admin folder.
For Example:
if the Site is running at IP address 192.168.0.201 and port 9999, then type ***http://192.168.0.201:9999/KWANTIFYPORTAL*** to the location bar.
*If you are on the server then type: ***http://localhost/kwantifyportal/****
- You will view the login page. Login as superadmin/***password*** and follow the steps for the configuration part.

4.0 User Guide:

1. If face any problem during installation, testing or use, please contact CSM development Group. Make sure to go through related document(s).